



# VYBO Electric products

Catalog of references



SOLUTIONS FOR INDUSTRY



# Introduction





# Company

**VYBO Electric** is a Hi-tech manufacturing plant and supplier of industrial electric motors with wide range of products. Manufacture plant is located in European Union in the Slovak Republic in Spisska Nova Ves in the Central Eastern part of the country. We have extensive experience in the production of electric motors and in the design of electric drive itself.



**More than 120 years of the electrical industry in our region...**

The location has been known for the electrotechnical industry and also for the manufacture of electric motors and electrotechnical equipment for over 120 years. The Slovak Republic is still one of the leading manufacturers of electric and technical equipment.

**Maximum quality, maximum flexibility and superfast delivery times...**

VYBO Electric is a specialist for high-tech, high efficiency big power and high voltage motors. The company is one of the leading suppliers of big power and medium, high voltage motors in European union.



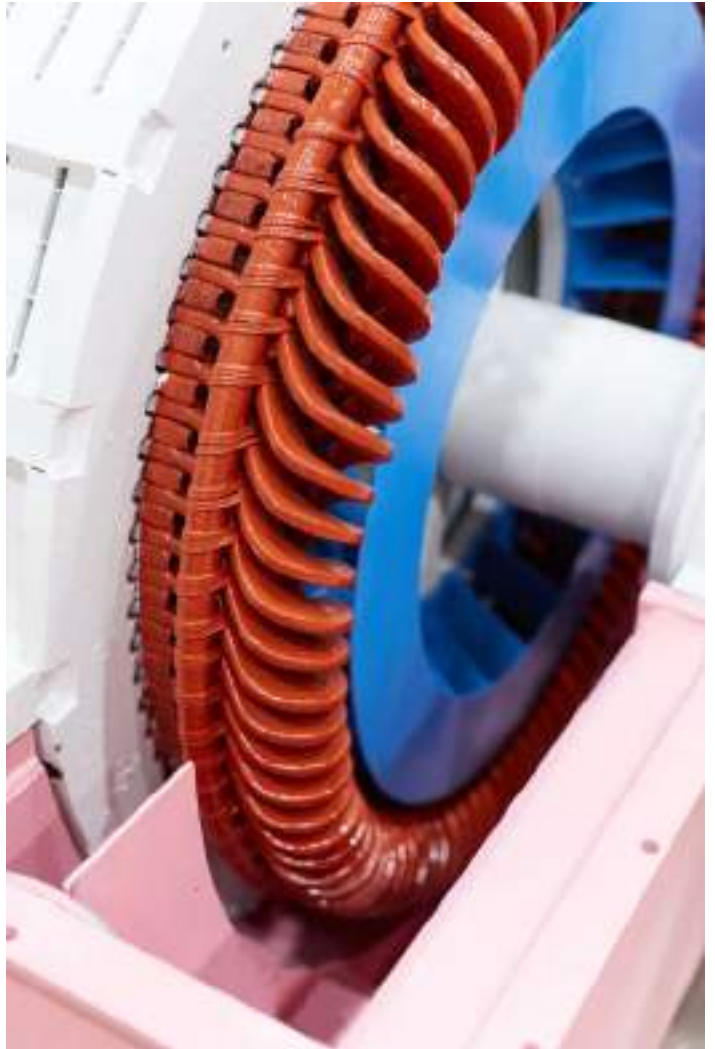




























# Briefing of construction

A steel plate welded construction has used to reduce the frame weight and increase the rigidity, optimum construction design also makes series motors convenience for installation and maintenance.

One piece laminations for the stator and rotor are precision-stamped form low loss electrical steel, thus the iron loss is minimized and the efficiency is improved.

The insulation class of series motors is class F. The stator coil is a double layer formed coil, the stator core is stacked and assembled with coils outside the frame, coil braces are applied on the circumference of the stator coil ends with spacers inserted between coils to improve rigidity. After the connection between coils is made, the completed stator winding is placed in a vacuum tank and impregnated, then the stator winding is put into the stator frame and fixed with it.

The standard design of the rotor is of copper bar construction, depending on starting conditions, the rotor bar are made of copper or copper alloy. Advanced brazing technology of the rotor bars to the end rings insures mechanical integrity and results in uniform strength and electrical conductivity at the brazed joints. By swaging the rotor bars against the slot sides, the vibrations of rotor bars to electromagnetic force or centrifugal force are eliminated and insure long motor life.

For the frame size below shaft height 500mm, the cast aluminum rotor construction is also possible. Because of the tight fitness between the rotor conductor and slot sides, the heat generated in the rotor conductor is easy to be dissipated, the safety locked rotor time is longer and the permitted moment of inertia to be driven by the motor is bigger.

For 2P motors form H355~H450 and all 4~12P motors, the stanard designed series motors adopt anti-friction bearings, self-lubricated with grease or oil according to motor's frame size and operating speed, separate oil supply system is not needed. Split sleeve bearings are sed for 2Pmotor from H500~H630 or when specified by purchaser, they are either ring-lubricated or forced-oil lubricated depending pon the loading.

The rotor cores are shrunk onto the shaft and rotor coils are tightly fitted into the slots to minimize vibration. Advanced brazing technology of the rotor coils to coils insures high mechanical strength and good electrical conductivity at the brazed joints. The coil ends are supported by bandage. The rotor winding is vacuum pressure impregnated(VPI) and connected to the slip ring unit. This construction gives the rotor an excellent fit against centrifugal forces.

The slip ring unit is mounted outside the frame to the non-drive end in order to provide easy maintenance without disassembling the motor. As a result, the bearing are closer together, preventing any vibration. Carbon dust, caused by brush wear, is prevented from entering the motor due to the unit. The slip ring unit has a shaft mounted fan and an easily removable and washable filter located in the slip ring housing to collect the carbon dust caused by brush wear.



# Quality management and certificates



VYBO Electric is a modern High-tech energy saving company that pays high attention to quality, environment, safety and precision and efficiency of work and energy in production. Therefore, it holds a lot of certificates and quality control systems. **Our priority is quality control.**

## Basic certificates include:

### ISO9001

The primary task of the ISO 9001 standard is to focus on system management and quality management in the organization. The satisfaction of the customer and the fulfillment of his requirements, which are specified in contracts, orders, or technical drawings, are in the first place. The quality management system is linked to all processes in the company. The standard focuses on the management of human and financial resources, on the stability of infrastructure, including buildings, transport, hardware, software and other communication or information technologies. An important part is also the planning of production and services, the management of the purchasing process, but also the management of non-conforming products.



### ISO14001

The main priority of the ISO 14001 standard is to identify and understand the environmental aspects and activities that are related to the entire infrastructure of the company and, based on this, to regulate the environmental impact on the environment.

In its scope, the ISO 14001 standard creates the conditions for determining environmental goals and plans, the fulfillment of which is examined at regular intervals by top management and also by an independent body during internal audits.

This standard is intended for all organizations and companies that consider environmental protection as their primary goal.

The benefit of the standard for society is mainly:

- control over the environmental impact on the environment
- control over produced emissions and waste
- saving material and energy
- prevention of accidents
- compliance of the company's activities with legal requirements
- zero fines for environmental behavior
- creation of a good reputation and prestige of the company





## The ISO 45001

Specification (formerly known as OHSAS 18001) is an internationally recognized standard that declares compliance with the principles of a safe enterprise, managing risks at work and protecting the health of workers during work. It does not only concern danger and accidents, but also emphasizes other aspects such as the good condition and mental well-being of the employee.

The certificate is held in Slovakia as STN ISO 45001:2019 and is under the title Management systems of safety and health protection at work. Requirements with guidance for use. It replaces the STN OHSAS 18001 standard.



## ISO50001

Energy management systems Energy efficiency help organizations save money, save energy resources and also help to prevent climate change. ISO 50001 encourages organizations in all sectors to use energy more efficiently through the development of an energy management system. The international standard ISO 50001: 2011 specifies the requirements for building, maintaining and improving the energy system. It aims to enable organizations to implement a systematic approach that will help achieve lasting improvements in energy efficiency, energy use and consumption.



	Selected reference projects VYBO Electric a.s.	
<b>Country</b>	<b>Selected reference projects in the last time</b>	Cooling
Poland	Asynchronous electric motor H17R-630-02 6000V 2400 kW 2991 rpm/min, sleeve bearings-RENK,IC411	IC411
Estonia	Asynchronous electric motor H17RL560-04,1500 kW; D660V, 50Hz; B3,IC416, VFD	IC411
Estonia	Asynchronous electric motor H17R-560-6,1250kW,6poles,6000V	IC411
Great Britain	Slip ring asynchronous electric motor H27R-SR-500-04,1250kW,F/B,IP55, voltage- 10 000V	IC611
Estonia	Asynchronous electric motor H17R-500-4, 900kW,4poles,6000V,IC411	IC411
Poland	Asynchronous electric motor H27R-500-06,1900kW,6poles,6000V ins. H/F, IP55,IC611	IC611
Romania	Asynchronous electric motor H27RT-710-04,1000kW,6000V,4poles,IC511	IC511
Czech republic	Asynchronous electric motor H27R630-6, 3000kW 6pole, Y6000V, 50Hz, S1, IP55, Izol F/F, IC611, IM B3, weight-12 000kg	IC611
Czech republic	Asynchronous electric motor H27R630-6, 3000kW 6pole, Y6000V, 50 Hz, S1, IP55, Izol F/F, IC611, IM B3,weight-12 000kg	IC611
Czech republic	Asynchronous electric motor H27R630-6, 3000kW 6pole, Y6000V, 50 Hz, S1, IP55, Izol F/F, IC611, IM B3,weight-12 000kg	IC611
Czech republic	Slip ring asynchronous electric motor, wound rotor H27R-SR-560-06-800, 1000 kW, 6pole	IC511
Germany	Slip ring asynchronous electric motor H27R-SR-630-06, 950kW, 6pole, efficiency 95.5%	IC511
Czech republic	Asynchronous electric motor H17R-500/630Z-4, 1350 kW, 6000 V, 1480 ot., IMB3	IC416
Mali	Asynchronous electric motor H27R-500-04, 800kW 3300V, IM B3,isol. F/B, IC411	IC511
Czech republic	Asynchronous electric motor H27R-630-08, 800kW, 8pole, Y6000V, IP55, IC511, izol. F, IM B3	IC511
Czech republic	Asynchronous electric motor H27RG-800-1120-K10/12, 1700/1000 kW, 10/12P, 6000V/6000V, 50Hz/50Hz,weight-15 000kg	IC01
Czech republic	Asynchronous electric motor H27RG-800-1120-K10/12, 1700/1000 kW, 10/12P, 6000V/6000V, 50Hz/50Hz,weight-15 000kg	IC01
Czech republic	Asynchronous electric motor H27RG-800-1120-K10/12, 1700/1000 kW, 10/12P, 6000V/6000V, 50Hz/50Hz,weight-15 000kg	IC01



Mali	Asynchronous motor H17RWS-500-04 / 500; 3300V, 900 kW,IP55,IM B3,S1, welded steel frame	IC411
Mali	Asynchronous motor H17RWS-500-04 / 500; 3300V, 900 kW,IP55,IM B3,S1, welded steel frame	IC411
Spain	Asynchronous electric motor H17RL-400-04, 800kW, 4pole, 400/690 (D/Y), IC411, IP55, IM B3	IC411
Spain	Asynchronous electric motor H17RL-400-04, 800kW, 4pole, 400/690 (D/Y), IC411, IP55, IM B3	IC411
Spain	Asynchronous electric motor H17RL-400-04, 800kW, 4pole, 400/690 (D/Y), IC411, IP55, IM B3	IC411
Spain	Asynchronous electric motor H17RL-400-04, 800kW, 4pole, 400/690 (D/Y), IC411, IP55, IM B3	IC411
Spain	Asynchronous electric motor H27R-630-06-500, 1750kW, Y6000V, 50Hz, IC611,IP55, IM B3	IC611
Spain	Asynchronous electric motor H27R-630-06-500, 1750kW, Y6000V, 50Hz, IC611,IP55, IM B3	IC611
Slovenia	Asynchronous electric motor H17R-355-04-CR, 500kW, 4pole, IC411, IP55, IM V1+double angular bearings	IC411
Slovenia	Asynchronous electric motor H17R-355-04-CR, 500kW, 4pole, IC411, IP55, IM V1+double angular bearings	IC411
Slovenia	Asynchronous electric motor H17R-355-04-CR, 500kW, 4pole, IC411, IP55, IM V1+double angular bearings	IC411
Slovenia	Asynchronous electric motor H17R-355-04-CR, 500kW, 4pole, IC411, IP55, IM V1+double angular bearings	IC411
Slovenia	Asynchronous electric motor H17R-355-04-CR, 500kW, 4pole, IC411, IP55, IM V1+double angular bearings	IC411
Slovenia	Asynchronous electric motor H17R-355-04-CR, 500kW, 4pole, IC411, IP55, IM V1+double angular bearings	IC411
Slovenia	Asynchronous electric motor H17R-355-04-CR, 500kW, 4pole, IC411, IP55, IM V1+double angular bearings	IC411
Slovenia	Asynchronous electric motor H17R-355-04-CR, 500kW, 4pole, IC411, IP55, IM V1+double angular bearings	IC411
Slovenia	Asynchronous electric motor H17R-355-04-CR, 500kW, 4pole, IC411, IP55, IM V1+double angular bearings	IC411
Slovenia	Asynchronous electric motor H17R-355-04-CR, 500kW, 4pole, IC411, IP55, IM V1+double angular bearings	IC411
Slovenia	Asynchronous electric motor H17R-355-04-CR, 500kW, 4pole, IC411, IP55, IM V1+double angular bearings	IC411
Slovenia	Asynchronous electric motor H17R-355-04-CR, 500kW, 4pole, IC411, IP55, IM V1+double angular bearings	IC411
Czech republic	Asynchronous electric motor H17R-315-04 200kW 4pole, 6000V, IC411, IP55, IM B3	IC411

Czech republic	Asynchronous electric motor H17R-315-04 200kW 4pole, 6000V, IC411, IP55, IM B3	IC411
Czech republic	Asynchronous electric motor H17R-315-04 200kW 4pole, 6000V, IC411, IP55, IM B3	IC411
Czech republic	Asynchronous electric motor H17R-315-04 200kW 4pole, 6000V, IC411, IP55, IM B3	IC411
Czech republic	Asynchronous electric motor H17R-315-04 200kW 4pole, 6000V, IC411, IP55, IM B3	IC411
Czech republic	Asynchronous electric motor H17R-315-04 200kW 4pole, 6000V, IC411, IP55, IM B3	IC411
UAE	Asynchronous electric motor H17RL355-4-4,500kW,2poles,400/690V,F/B	IC411
UAE	Asynchronous electric motor H17RL355-4-4,500kW,2poles,400/690V	IC411
UAE	Asynchronous electric motor H17RL355-4-4,500kW,2poles,400/690V	IC411
UAE	Asynchronous electric motor H17RL355-4-4,500kW,2poles,400/690V	IC411
UAE	Asynchronous electric motor H17RL355-4-4,500kW,2poles,400/690V	IC411
Slovenia	Asynchronous electric motor H27R500-06, 800 kW, 990 rpms,6000V,IP55, IC611	IC611
Slovenia	Asynchronous electric motor H27R500-06, 800 kW, 990 rpms,6000V,IP55, IC611	IC611
Slovenia	Asynchronous electric motor H27R500-06, 800 kW, 990 rpms,6000V,IP55, IC611	IC611
Slovenia	Asynchronous electric motor H17R-315-500-CR-04, 200kW, 4pole, Y6000V, 50Hz, Izol F, CU rotor, IC411, IP54, IM 1001	IC411
Slovenia	Asynchronous electric motor H17R-315-500-CR-04, 200kW, 4pole, Y6000V, 50Hz, Izol F, CU rotor, IC411, IP54, IM 1001	IC411
Slovenia	Asynchronous electric motor H17R-315-500-CR-04, 200kW, 4pole, Y6000V, 50Hz, Izol F, CU rotor, IC411, IP54, IM 1001	IC411
Slovenia	Asynchronous electric motor H17R-315-500-CR-04, 200kW, 4pole, Y6000V, 50Hz, Izol F, CU rotor, IC411, IP54, IM 1001	IC411
Slovenia	Asynchronous electric motor H17R-315-500-CR-04, 200kW, 4pole, S1, Y6000V, 50Hz, IP54, IC411, Izol F, CU rotor, IM 1001	IC411
Slovenia	Asynchronous electric motor H17R-315-500-CR-04, 200kW, 4pole, S1, Y6000V, 50Hz, IP54, IC411, Izol F, CU rotor, IM 1001	IC411
Slovenia	Asynchronous electric motor H17R-315-500-CR-04, 200kW, 4pole, S1, Y6000V, 50Hz, IP54, IC411, Izol F, CU rotor, IM 1001	IC411
Slovenia	Asynchronous electric motor H17R-315-500-CR-04, 200kW, 4pole, S1, Y6000V, 50Hz, IP54, IC411, Izol F, CU rotor, IM 1001	IC411



Slovenia	Asynchronous electric motor H17R-315-500-CR-04, 200kW, 4pole, S1, Y6000V, 50Hz, IP54, IC411, Izol F, CU rotor, IM 1001	IC411
Belgium	Asynchronous electric motor H17R-355-04, 405kW, 4pole, D3000V, 50Hz, IC411, IP55, IM B3	IC411
Czech republic	Asynchronous electric motor H27R-SR-710-0 800 kW, 6pole, 3kV, 93A,	IC511
Czech republic	Asynchronous electric motor H27R-710-06,630kW,6 poles,IsoIF/B,6000V,IP55, IC511	IC511
Czech republic	Asynchronous electric motor H17RT-355L-4 200kW 4pole, 3kV, 50Hz, IM B3	IC511
Croatia	Slip ring Asynchronous electric motor H27R-SR-630-06, 860kW, 6pole Y6000V, 50Hz, S1, IP55, Izol F, IC37, RAL7030IM B3	IC37
Egypt	Slip ring Asynchronous electric motor H17R-SR-355-06-400, 315kW, 6pole, Y6300V, temp. class F/F, IC411, IP55, IM B3	IC411
Estonia	Asynchronous electric motor H17RL-355-02, 400kW, 2pole, 400/690V, 50Hz, Izol H, IC411, IP55, IM B3	IC411
Estonia	Asynchronous electric motor 3LCX-355L-6, 300kW, 6pole, IC411, IP55, IM B3	IC411
Finland	Asynchronous electric motor 3LC-355LX-4, 400kW, 4pole, IC411, IP55, IM V15	IC411
Finland	Asynchronous electric motor 3LC-315LX-4, 250kW, 4pole, IC411, IP55, IM V15	IC411
France	Asynchronous electric motor 2LC-315XL-6, 250 kW, 6pole, IC411, IP55, IM B3	IC411
France	Asynchronous electric motor 3LC-355M-6, 225 kW, 6pole, 400/690V (J/J), 50 Hz, IC411, IP55, Iso F, S1	IC411
Germany	Asynchronous electric motor 3LC400L-8, 355kW, 8pole, 400V, 50Hz, S1, IP55, IC411	IC411
Nigeria	Asynchronous electric motor 3LC-355L-4, 355kW, 4 pole, 400/690V (D/Y), 50Hz, temp. class F, IC411, IP55, IM B3	IC411
Slovakia	Asynchronous generator H17ROL-450-14-560, 250kW, D400V, IC411, IP55, IM B3	IC411
Slovakia	Asynchronous electric motor 3LC355L1-6, 250 kW, IC411, IP55, IM B3	IC411
Slovakia	Asynchronous electric motor H17RT 355X-4, 250kW, 4pole, Y6000V, 50Hz, IM 1001	IC511
Spain	Slip ring Asynchronous electric motor 407kW, 10poles, 6300V, 50 Hz, IC511, IM V1, Service factor 2.1, weight 10500kg	IC511
Taiwan	Asynchronous electric motor 3LC-355L-6, 200kW, 6pole, 380/660V, 50Hz, Izol F, IC411, IP55, IM B3	IC411
Turkey	Asynchronous electric motor H17R-400-06, 630kW, 6pole, Y6000V, 50Hz, temp. class F, IC411, IP55, IM B3	IC411

Czech republic	Asynchronous electric motor, H17RL-450-10,600kW, 593 ot., D 400V, 50Hz, IP55, IM B3,isol.H,temp rise B	IC411
Czech republic	Asynchronous electric motor H27R-560-06, 900 kW, 6pole, Y6000V, 50Hz, IP33 IM B3	IC611
Czech republic	Asynchronous electric motor 3LC-355L-2, 355kW, 2pole, IP55, IC416, IM B3	IC416
Czech republic	Asynchronous electric motor 3LC355L-4, 355 kW, 4pole, IC411, IP55, IM B3	IC411
Czech republic	Asynchronous electric motor 3LC355L-4, 355 kW, 4pole, IC411, IP55, IM B3	IC411
Czech republic	Asynchronous electric motor H17R-600-06, 400 kW, 6pole, Y6000V, 50 Hz, IP54, IC411, Izol F - IM 1001	IC411
Czech republic	Asynchronous electric motor H27RT-600S-8, 315 kW, 8pole, Y6000V, 50Hz, S1, IP54, Izol F, IM 1001	IC511
Czech republic	Asynchronous electric motor H17R-ODP-355Y-2, 400kW,2 poles,6000V,IC01, IP23,IM B3	IC01
Czech republic	Asynchronous electric motor H17R-ODP-355Y2, 400kW2 poles,6000V,IC01, IP23,IM B3	IC01
Czech republic	Asynchronous electric motor 3LC-355L-4, 315kW, 4pole, IC411, IP55, IM B3	IC411
Czech republic	Asynchronous electric motor 3LCR-315LX-2-Z, 250kW, 2pole, IC411, IP55, IM B3	IC411
Czech republic	Asynchronous electric motor 3LC-315L-4, 200kW, 2pole, D400V, 50Hz, IC416, IP55,IM B35	IC416
Croatia	Slip ring Asynchronous electric motor H30R-SR-630-06, 860kW, 6pole, Y6000V, 50Hz, IM B3	IC37
Denmark	Asynchronous electric motor H17RL-355-08-Z, 350kW, 8pole,VFD duty, D400V, IP55, temp.class F/F, IC416, IM B3	IC416
Finland	Asynchronous electric motor 3LC-315L-4, 250kW, 4pole, IC411, IP55, IM V15,	IC411
Finland	Asynchronous electric motor 3LC-315L-4, 250kW, 4pole, IC411, IP55, IM V15,	IC411
Finland	Asynchronous electric motor 3LC-355LX-4, 400kW, 4pole, IC411, IP55, IM V15,	IC411
Finland	Asynchronous electric motor 3LC-355LX-4, 400kW, 4pole, IC411, IP55, IM V15,	IC411
Finland	Asynchronous electric motor 3LC-315L-4, 250kW, 4pole, 400/690V, 50Hz, IP65, Izol F, IC411, IM V1 (IM B35)	IC411
Finland	Asynchronous electric motor 3LC-355LX-4, 400kW, 4pole, 400/690V, 50Hz, IP65, Izol H/F, IC411, IM V1 (IM B35)	IC411
Finland	Asynchronous electric motor 3LC-315L-4, 250kW, 4pole, IC411, IP55, IM V1	IC411



Finland	Asynchronous electric motor 3LC-355LX-4, 400kW, 4pole, IC411, IP55, IM V1,	IC411
Finland	Asynchronous electric motor 2LC-315L-4, 250kW, 4pole, temp. class F/F, IC411, IP55, IM V15	IC411
Finland	Asynchronous electric motor 3LC-355LX-4, 400kW, 4pole, temp. class F/F, IC411, IP55, IM V15,	IC411
France	Asynchronous electric motor H27R-450-08, 355 kW, 8pole, 550V, S1, IP54, 50Hz,temp class F/B,IC511 special frame	IC511
France	Asynchronous electric motor H27R-500-08, 405kW, 8pole, Y5500V, 50Hz,temp class F/B,IC511 special frame	IC511
Netherlands	Asynchronous electric motor H27R-500-08, 210 kW, 8pole,6000V,Vertical IMV1+ special flange,IP55,IC511,Isol F/B	IC511
Netherlands	Asynchronous electric motor H27R-500-08,210 kW, 8pole,Vertical IMV1+ special flange,IP55,IC511,Isol F/B	IC511
Netherlands	Asynchronous electric motor H17RL-355-02, 400 kW, 2pole, Y690V, 50Hz, S1, IC411, IP55, Izol H, IM B3	IC411
Ireland	Asynchronous electric motor H17RL-400-04-K, 630kW, 4pole, D400V, 50Hz, IC411, IP55, IM B3	IC411
Latvia	Asynchronous electric motor 4LC-355LX-04, 400kW, 4pole, 400/690V (D/Y), 50Hz, IP55, temp. class H/B, IC411, IM B3	IC411
Latvia	Asynchronous electric motor 3LC-355LX-4, 400kW, 4pole, D400V, temp. class F/F, IC411, IP55, IM B3	IC411
Chille	Asynchronous electric motor, H17RL-450-06, 900kW, 6poles, D690V, 50Hz, S1, IC411, IP55, Izol F / B - IM B3	IC411
Chille	Asynchronous electric motor H17RL-450-06, 900kW, 6pole, D690V, 50Hz, S1, IP55, IC416, IM B3	IC416
Nigeria	Asynchronous electric motor 3LC-355L-4, 355kW, 4pole, 400/690V (D/Y), 50Hz, temp. class F, IC411, IP55, IM B3,	IC411
Singapore	Asynchronous electric motor H27R-710-10, 800kW, 10pole, Y6000V, 50Hz, IM B3	IC611
Singapore	Asynchronous electric motor, H17RL-355-02L 560KW, 2pole, 400V, 50Hz, IC411, IP55, IM B3	IC411
Singapore	Asynchronous electric motor, H17RL-355-02L-Z 560KW, 2pole, 400V, 50Hz, IC411, IP55, IM B3	IC411
Slovakia	Asynchronous generator H17ROL-450-14-560, 220kW, D400V, IM B3	IC01
Slovakia	Asynchronous electric motor H17RL-400-06, 560kW, 400V, 50Hz, IC411, IP55, IM ??	IC411
Slovakia	Asynchronous electric motor H17RO-315L-2, 220kW, 2pole, D400V, 50Hz, S9, IM B3, IEC60034	IC01
Slovakia	Asynchronous electric motor 3LC315L2-4, 200kW, 4pole, IC411, IP55, IM B3	IC411

Slovakia	Asynchronous generator H17ROL-450-14-560, 250kW, D400V, IM B3	IC01
Slovenia	Asynchronous electric motor H27R-500-06, 315kW, 6pole, Y6000V, 50Hz, S1, IP55, IC511, Izol F, IM B3,brass bar rotor	IC511
Slovenia	Asynchronous electric motor H27R-500-06, 315kW, 6pole, Y6000V, 50Hz, S1, IP55, IC511, Izol F, IM B3	IC511
Slovenia	Asynchronous electric motor H27R-500-06, 315kW, 6pole, Y6000V, 50Hz, S1, IP55, IC511, Izol F, IM B3	IC511
Slovenia	Asynchronous electric motor H27R-500-06, 315kW, 6pole, Y6000V, 50Hz, S1, IP55, IC511, Izol F, IM B3	IC511
Slovenia	Asynchronous electric motor H17RK-355-04-475, 355kW, 4pole,Y6000V, 50Hz, S1, IC411, IP55, Izol F/B, IM 1001	IC411
Slovenia	Asynchronous electric motor 3LC-355L-4, 315 kW, 4pole, 400/690V (D/Y), 50 Hz, S1, temp. class F/B, IC411, IM B3	IC411
Slovenia	Asynchronous electric motor 3LC-355L-4, 315 kW, 4pole, 400/690V (D/Y), 50 Hz, S1, temp. class F/B, IC411, IM B3	IC411
Slovenia	Asynchronous electric motor 2LC-355M-4, 315kW, 4pole, 400/690V (D/Y), 50Hz, S1, IP55, temp.class F/F, RAL5012, IC411	IC411
Spain	Slip ring Asynchronous electric motor H27R-SR-400-06, 400kW, 6pole, 3100V, 50Hz,special forced cooling	IC616
Spain	Slip ring Asynchronous electric motor H27R-SR-500-06, 650kW, 6pole, 3100V, 50Hz,special forced cooling from right side	IC666
Spain	Asynchronous electric motor H17RL-400-06, 400kW, 6pole, IC411, IP55, IM B3	IC411
Spain	Asynchronous electric motor H17RLA-400-06-K, 400kW, 6pole, IC411, IP55, IM B3	IC411
Venezuela	Asynchronous electric motor 17R-368-04, 1000Hp, 4pole, D4160V, 60Hz, IM B3,NEMA norm	IC411
Spain	Slip ring Asynchronous electric motor H17RL-SR-525-06, 355kW, 6pole, D500V, S1, IP55, Izol F, IC411, RAL7030, IM B3	IC411
Spain	Asynchronous electric motor VFD duty H17RL-450-06, 600kW, 6pole, D550V, 50Hz, IC411, IP55, IM B3	IC411
Spain	Asynchronous electric motor 4LC355L-4, 355kW, 4pole, 400/690V, 50Hz, S1, IP55, IC411, IM B3,IE4-premium eff.	IC411
Spain	Asynchronous electric motor H17RK-355-04, 400kW, 4pole, Y6300V, 50Hz, IC411, IP55, IM B3	IC411
Spain	Asynchronous electric motor 3LC-355ML-6, 200kW, 6pole, 400/690V (D/Y), 50 Hz, S1, IP55, Izol F, Temp. rise B, IC416	IC416
Spain	Asynchronous electric motor 4LC315L-4, 200kW, 4pole, IC411, IP55, IM B3	IC411
Sweden	Asynchronous electric motor H17RL-400-04-630, 700kW, star 500V, 50Hz, S6-60%, IC411, IP55, IM B3	IC411



Sweden	Asynchronous electric motor 3LC355L-2, 410kW, 2pole, IC411, IP55, VFD duty IM B3	IC411
Taiwan	Asynchronous electric motor H17R-355-06, 315kW, 6pole, D3300V, 60Hz, IC411, IP55, IM B3	IC411
Turkey	Asynchronous electric motor H17RL-400-02, 630kW, 2pole, temp. class H/F, IC411, IP55, IM B3	IC411
United Kingdom	Asynchronous electric motor 4LC355L-4, 400kW, 4pole, 400/690V, 50Hz, S1, IP55, IC411, Izol H, IM B3	IC411
Slovenia	Asynchronous electric motor H17R-450L-6, 850kW, 6pole, IC411, IP55, IM B3	IC411
Italy	Asynchronous electric motor VFD duty H17RL-400-04, 800kW, 4pole, D460V/Y690V, 60Hz, S1, IP55, Izol H/ B, IC411, IM B3	IC411
Mali	Asynchronous electric motor H27R-500-04, 800kW 3300V, IM B3,isol. F/B, IC411	IC511
Czech republic	Asynchronous electric motor H27R-630-08, 800kW, 8pole, Y6000V, IP55, IC511, izol. F, IM B3	IC511
United Kingdom	Slip ring asynchronous electric motor H27R-SR-355-04-Z, 700 kW, 4pole, Y6600V, 50Hz, IP55, IM B3,special extreme presurised highe power version	IC666
Czech republic	Asynchronous electric motor H27R630Z-10, 630kW 10pole, 6000V, 50Hz, IP54, IC511, F/F, IM B3	IC511
Croatia	Asynchronous electric motor H17RDCR-500-06, 630kW, 6pole, Y6000V, SF=1.15, IC411, Special copper double cage rotor	IC411
Estonia	Asynchronous electric motor H17RL-355-04, 630kW, 4pole, Y660V, IC416, IP55 IM B3	IC416
Slovakia	Asynchronous electric motor H17R-400-06-710, 630kW, 6pole, Y6000V, 50Hz, S1, IC411, IP55, temp.class F/ F, IM ??	IC411
Slovakia	Asynchronous electric motor 1YF-710S-6, 630kW, 6pole, 1Y6000V, 50Hz, S1, IP55, Izol F, IC511, IM B3	IC511
Sweden	DC electric motor 1GDC-400-04, 620kW, 600V, temp. class F/F, IM B3	IC06
Latvia	Asynchronous electric motor H17RLC-400-02-Z, 560kW, 2pole, Y700V, IC411, IP55, IM B3	IC411
Czech republic	Asynchronous electric motor H17RL-400-04, 630kW, 4pole, 400/690V, temp. class F, IC411, IP55, IM B3	IC411
Czech republic	Asynchronous electric motor H27R-710-06, 500kW, 6pole, Y6000V, 50Hz, S1, IP54, IM1001/700 IM B3	IC511
Czech republic	Asynchronous electric motor H27R-500Y-6, 500kW, 6pole, Y6000V, 50 Hz, S1, IP54, Izol F, IC511, IM 1001/5000 IM B3	IC511
Czech republic	DC electric motor 1GDC-355-04, 375kW, 4pole, 460V, S1, IP23S, IC06, IM 1001 +external cooling 3x400V	IC06
Czech republic	Asynchronous electric motor H27R-710-06, 500kW, 6pole, Y6000V, 50Hz, 710-IM B3	IC511

Czech republic	Asynchronous electric motor, 600kW, 593 ot., D400V, 50Hz, IP55, IM B3	IC411
Czech republic	Asynchronous electric motor, H17RL-355-04, 500 kW, 4pole, 400V/690V, IC411, IP55, IM B	IC411
Czech republic	Asynchronous electric motor H27R-355-4, 250kW, 4pole, Y6000V, 50Hz, IM 1001, IC511	IC511
Czech republic	Asynchronous electric motor H27R-355Z-4, 315kW, 4pole, 6000V, IC511, IM 1001	IC511
Czech republic	Asynchronous electric motor H27RT- 355Y-4, 315kW, 4pole, Y6000V, 50Hz, S1, IP55, Izol F, IC511,	IC511
Czech republic	Asynchronous electric motor H27R355/500-6-200kW, 6pole, Y6000V, 50 Hz, S1, IP54, Izol F, IC511, IM B3	IC511
Czech republic	Asynchronous electric motor H17RL-315-04, 250kW, 4pole, IC411, IP55, IM B3	IC411
Estonia	Asynchronous electric motor H17RL-400-04, 350kW, 4pole, IC411, IP55, IM B3	IC411
Estonia	Asynchronous electric motor 3LC-355LZ-4, 315kW, 4pole, IC411, IP55, IM ??	IC411
Finland	Asynchronous electric motor 3LC-315L-4, 250kW, 4pole, 400/690V, 50Hz, S1, IP55, Izol F, IC411, IM V1	IC411
Finland	Asynchronous electric motor 3LC-355LX-4, 400kW, 4pole, 400/690V, 50Hz, S1, IP55, temp. class F/F, IC411, IM V1	IC411
Netherlands	Asynchronous electric motor 2LC-355LX-2, 400kW, 2pole, IC411, IP55, IM B3	IC411
Jordan	Asynchronous electric motor H17R-355-06, 380kW, 6pole, 6600V, IC411, IP55, IM B3	IC411
Jordan	Asynchronous electric motor 3LC-355LX-4, 400kW, temp. class F, IC411, IP55, IM V5,	IC411
Mali	Asynchronous electric motor H17RT-355/400-4, 375kW 3300V 4pole, Frame: 1LA1400,IP55, IM B3	IC511
Mali	Asynchronous electric motor H17RT-355/400-4,375kW 3300V 4pole, Frame: 1LA1401,IP55, IM B3	IC511
Mali	Asynchronous electric motor VFD duty H17RL-355-04, 355kW, 4pole, Y525V, 50Hz, IC411, IP55, IM B3	IC411
Mali	Asynchronous electric motor VFD duty H17RL-355-04, 355kW, 4pole, Y525V, 50Hz, IC411, IP55, IM B4	IC411
Mali	Asynchronous electric motor H17RT-355/400-4, 375kW, 3300V 4pole, FRAME: 1LA 1400	IC511
Germany	Asynchronous electric motor H17R-315-04-485, 210kW, 4pole, Y6000V, 50Hz, S1, IP55, Izol F/B, IC411, IP55, IM B3	IC411
Poland	Asynchronous electric motor H17RL-400-06, 400kW, 6pole, Y500V, temp. class F/F, IC411, IP55, IM B3	IC411

Poland	Asynchronous electric motor H17R-355H6KC, 200kW, 6pole, 50Hz, 6000V, IM1001, IM B3, insulation class F	IC411
Poland	Asynchronous electric motor H17RL-355M4, 200kW, 500V, 1486 obr	IC411
Russia	Asynchronous electric motor H17R-SR-355-4, 250 kW, 4pole, IC411 special MV slip ring motor IP55,IM B3,6000V	IC411
Slovakia	Asynchronous electric motor H17RL-355L-4, 260kW, 4pole, D400V, 50Hz, S1, IP55, temp.class F, IC411, P55 IM B3	IC411
Slovakia	Asynchronous electric motor H17RL-355L-4, 260kW, 4pole, D400V, 50Hz, S1, IP55, temp.class F, IC411, P55 IM B4	IC411
Slovakia	Asynchronous electric motor 4LC-315L2-4, 200kW, D400V, 50Hz, S1, IC411, IP55, Izol F, IM B3	IC411
Slovenia	Asynchronous electric motor with copper bar rotor, H17R-400-04, 450kW, 4pole, Y6000V, IC411, IP55, IM B3 DOL starting	IC411
Slovenia	Asynchronous electric motor with copper bar rotor, H17R-400-04, 450kW, 4pole, Y6000V, IC411, IP55, IM B3 DOL starting	IC411
Slovenia	Asynchronous electric motor H27R-500-06, 500kW, 6pole, Y6000V, temp. class F/F, IM B3	IC611
Slovenia	Slip ring asynchronous electric motor VYBO type H27R-400-04, 500kW 4 pole, Y6000V, 50Hz, S1, IP54, Izol F, IM B3	IC616
Slovenia	Slip ring asynchronous electric motor 1SR-400-06, 200kW, 6pole, 400V, 50Hz, S1, IP54, temp. class F, IC511, RAL7030	IC511
Slovenia	Slip ring asynchronous electric motor 1SR-400-06, 200kW, 6pole, 400V, 50Hz, S1, IP54, temp. class F, IC511, RAL7030	IC511
Slovenia	Asynchronous electric motor H17RL-355-400-12, 200kW, 12pole, 400/690V (D/Y), 50Hz, S1, IP55, IC411, RAL5015, IM V1	IC411
Slovenia	Asynchronous electric motor H17R-400-04, 450kW, 4pole, Y6000V, CU rotor, IC411, IP55, IM B3	IC411
Slovenia	Asynchronous electric motor H17R-355-04, 200kW, 4pole, Y6000V, 50Hz, S1, IP54, Izol F, IC411, IM 1001	IC411
Taiwan	Asynchronous electric motor H17R-355-06, 315kW, 6pole, IC411, IP55, IM B3, 3000V	IC411
Taiwan	Asynchronous electric motor 3LC-355L-6, 300HP (220kW), 6pole, IC411, IP55, IM B3	IC411
Italy	Asynchronous electric motor VFD duty 3LC-355M-4, 250kW, 4pole, D400V, S1, IP55, Izol F, temp.Rise B, IC411, IM B3	IC411
Italy	Asynchronous electric motor H17RL-400-02, 510kW, 2pole, D440V, 60Hz, IC411, IP55, IM B3	IC411
Italy	Asynchronous electric motor H17RL-315-04, 315kW, 4pole, D400V, 50Hz, S9, IP55, Izol F, IC411, IM B3	IC411
Turkey	Asynchronous electric motor H17RL-355-06, 480kW, 6pole, Izol F, temp. rise 110K, IC411, IP55, IM B3	IC411



Slovakia	Asynchronous electric motor for VFD H17RL-400-06,560kW,690V,6poles, IC411	IC411
Czech republic	Asynchronous electric motor H17R-355-4-4,500kW,1475RPM,6000V	IC411
Ukraine	Asynchronous electric motor H27RL630-8, 800kW,8poles,690V,VFD use, IC511	IC611
Czech republic	Asynchronous electric motor H27R-710-10,800kW,10poles,6000V,F/F,IMV 1-vertical	IC616
Czech republic	Asynchronous electric motor H27R-500-10, 800 kW 10 poles,IC666	IC666
Romania	Asynchronous electric motor t H27R-400-04-560-ZX; Un=6KV; Pn=500kW; Nn=1500 rpm, In=59,7A	IC611
Romania	Asynchronous electric motor H27R-SR-500-06 (630 kW,1000 rot/min. 6 kV,	IC01
Czech republic	Asynchronous electric motor H27R-710-08, 630 kW, 740 ot., 500V914A. 50Hz, SI, IP55	IC511
Poland	DC motor 1GDC-400L, 620 kW, 520V, 1200A, Izol F, IC01, IP23, IM B3	IC06
Czech republic	Slip ring asynchronous electric motor H27R-SR-500-06 / 710, 800kW; IM B3	IC611
Romania	Asynchronous electric motor H27R-ODP-500-06 /630 kW/1000 rot/min/	IC01
Iran	Asynchronous electric motor H17RL-400-4-4-Z, 690 kW/:1491 rpms.	IC411
Czech republic	Asynchronous electric motor H17R-400-4,630 kW, 6000 V, IM4 411/IMV1	IC411
Slovakia	Asynchronous electric motor H17R400-02-500, 560 kW, 2-pole, B3	IC411
Czech republic	Asynchronous electric motor H27RT-600-4,630 kW, 1475 RPM, 6000 V	IC511
Czech republic	Asynchronous electric motor H27RT-710-6,630 kW, 6 pol, Y6000V, IM1001	IC511

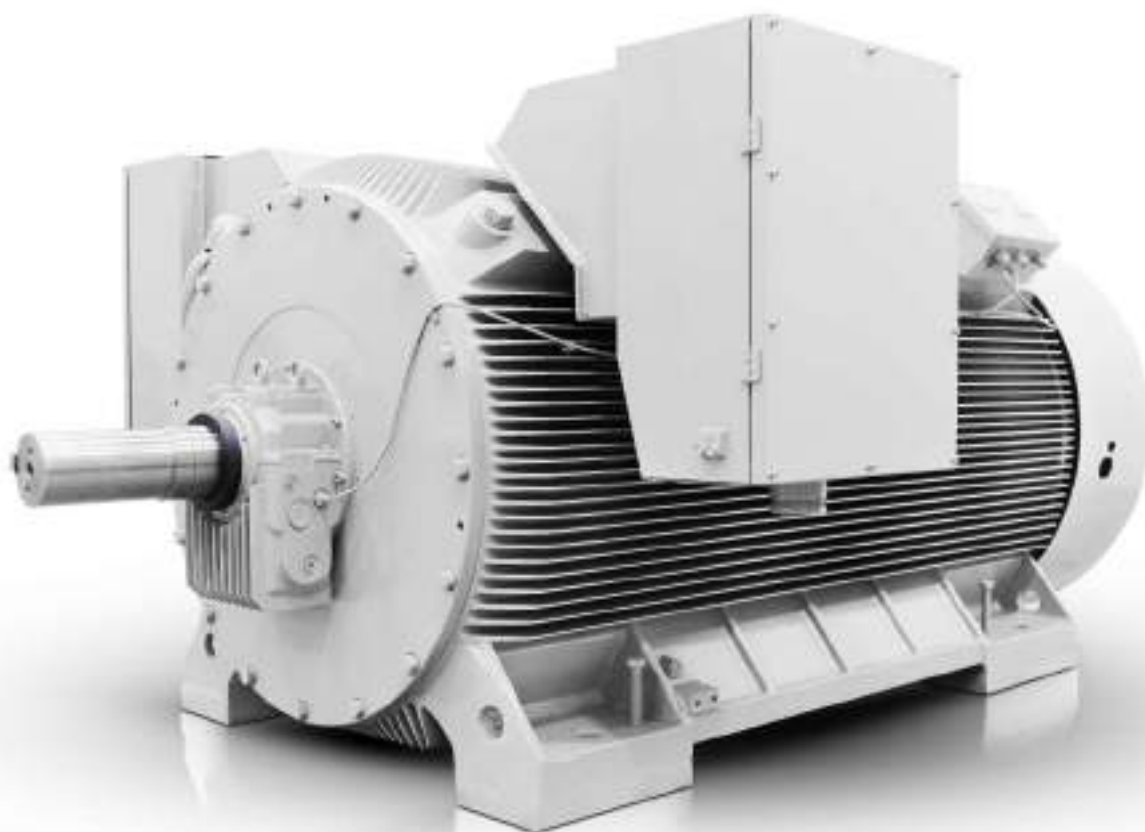
Selected reference  
projects with photos:



SOLUTIONS FOR INDUSTRY

# Special compact high power HV motor H17R-560/630-02

<b>VYBO Electric motor type</b>	Asynchronous electric motor H17R-630-02
<b>Country</b>	Poland
<b>Application</b>	High pressure pump KSB
<b>Rated power</b>	2400 kW
<b>Rate voltage</b>	6000V
<b>Number of poles</b>	2 pole
<b>Rated speed</b>	2991 rpm
<b>Rated frequency</b>	50Hz
<b>Type of construction</b>	Cast iron
<b>Frame size / Shaft height</b>	560/630
<b>Protection class</b>	IP55
<b>Cooling type</b>	IC411
<b>Motor standard</b>	IEC / EN 60034-1
<b>Weight</b>	10 000kg
<b>Insulation class</b>	F
<b>Special execution</b>	sleeve bearings-RENK







# Modular HV electric motors H27R630-6 with high torque and copper bar rotor

<b>VYBO Electric motor type</b>	Asynchronous electric motor H27R630-6
<b>Country</b>	Czech republic
<b>Application</b>	Fan
<b>Rated power</b>	3000 kW
<b>Rate voltage</b>	6000V
<b>Number of poles</b>	6 pole
<b>Rated speed</b>	991 rpm
<b>Rated frequency</b>	50Hz
<b>Type of construction</b>	IM B3
<b>Frame size / Shaft height</b>	630mm
<b>Protection class</b>	IP55
<b>Cooling type</b>	IC611
<b>Motor standard</b>	IEC / EN 60034-1
<b>Weight</b>	12 000 kg
<b>Insulation class</b>	F
<b>Special execution</b>	Selv cooled sleeve bearings,copper bar high starting torque rotor
<b>Quantity</b>	3 pcs









# Special double speed HV electric motors H27RG-800-1120-K10/12

<b>VYBO Electric motor type</b>	Asynchronous electric motor H27RG-800-1120-K10/12
<b>Country</b>	Czech republic
<b>Application</b>	flue gas fan
<b>Rated power</b>	1700/1000 kW
<b>Rate voltage</b>	6000V
<b>Number of poles</b>	10/12 pole
<b>Rated speed</b>	590rpm/494rpm
<b>Rated frequency</b>	50Hz
<b>Type of construction</b>	IM 1001
<b>Frame size / Shaft height</b>	800/1120
<b>Protection class</b>	IP23
<b>Cooling type</b>	IC01
<b>Motor standard</b>	IEC / EN 60034-1
<b>Weight</b>	15 000 kg
<b>Insulation class</b>	F
<b>Special execution</b>	Double speed motors with double shaded windings











# VFD low voltage compact electric motor H17RL560-04

<b>VYBO Electric motor type</b>	Asynchronous electric motor H17RL560-04
<b>Country</b>	Estonia
<b>Application</b>	Fan
<b>Rated power</b>	1500 kW
<b>Rate voltage</b>	660V
<b>Number of poles</b>	4 pole
<b>Rated speed</b>	1491 rpm
<b>Rated frequency</b>	50Hz
<b>Type of construction</b>	IM B3
<b>Frame size / Shaft height</b>	560mm
<b>Protection class</b>	IP55
<b>Cooling type</b>	IC411
<b>Motor standard</b>	IEC / EN 60034-1
<b>Weight</b>	7800kg
<b>Insulation class</b>	F
<b>Special execution</b>	VFD winding with insulated bearings and sheilds











# HV compact electric motor H17R-560-6

<b>VYBO Electric motor type</b>	Asynchronous electric motor H17R-560-6
<b>Country</b>	Estonia
<b>Application</b>	Pump
<b>Rated power</b>	1250 kW
<b>Rate voltage</b>	6000V
<b>Number of poles</b>	6 pole
<b>Rated speed</b>	994 rpm
<b>Rated frequency</b>	50Hz
<b>Type of construction</b>	Cast iron
<b>Frame size / Shaft height</b>	560mm
<b>Protection class</b>	IP55
<b>Cooling type</b>	IC411
<b>Motor standard</b>	IEC / EN 60034-1
<b>Weight</b>	8800kg
<b>Insulation class</b>	F
<b>Special execution</b>	Vibration sensors







# Slip ring high voltage asynchronous electric motor H27R-SR-500-04

<b>VYBO Electric motor type</b>	Slip ring asynchronous electric motor H27R-SR-500-04
<b>Country</b>	Great Britain
<b>Application</b>	Ball mill
<b>Rated power</b>	1250 kW
<b>Rate voltage</b>	10 000V
<b>Number of poles</b>	4 pole
<b>Rated speed</b>	1485 rpm
<b>Rated frequency</b>	50Hz
<b>Type of construction</b>	Welded steel
<b>Frame size / Shaft height</b>	500mm
<b>Protection class</b>	IP55
<b>Cooling type</b>	IC611
<b>Motor standard</b>	IEC / EN 60034-1
<b>Weight</b>	9700kg
<b>Insulation class</b>	F
<b>Special execution</b>	-



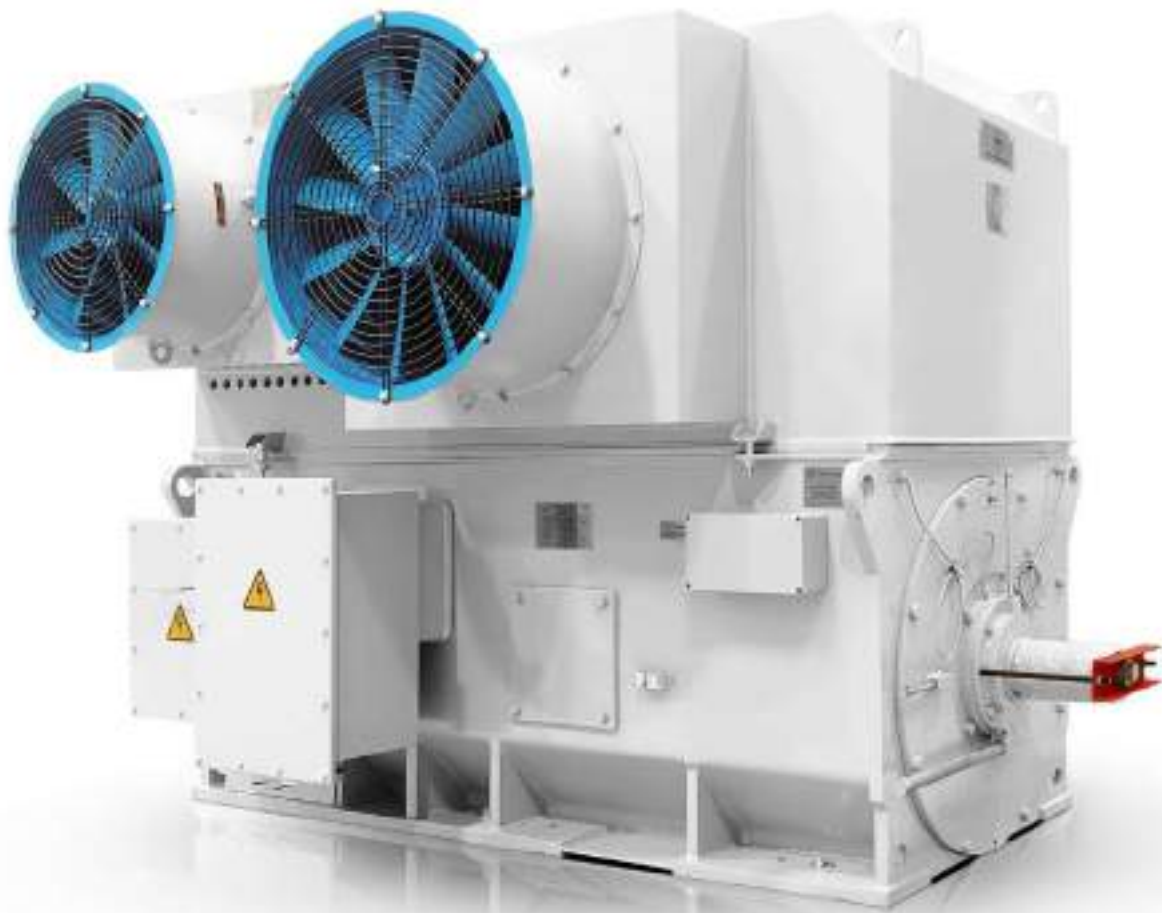






# Slip ring asynchronous electric motor with cooling IC616 on side VYBO type H27R-400-04

<b>VYBO Electric motor type</b>	Slip ring asynchronous electric motor VYBO type H27R-400-04
<b>Country</b>	Slovenia
<b>Application</b>	mine hoist
<b>Rated power</b>	500 kW
<b>Rate voltage</b>	6000V
<b>Number of poles</b>	4 pole
<b>Rated speed</b>	1470 rpm
<b>Rated frequency</b>	50Hz
<b>Type of construction</b>	welded steel
<b>Frame size / Shaft height</b>	400mm
<b>Protection class</b>	IP55
<b>Cooling type</b>	IC616
<b>Motor standard</b>	IEC / EN 60034-1
<b>Weight</b>	4700kg
<b>Insulation class</b>	F
<b>Special execution</b>	side cooling IC616



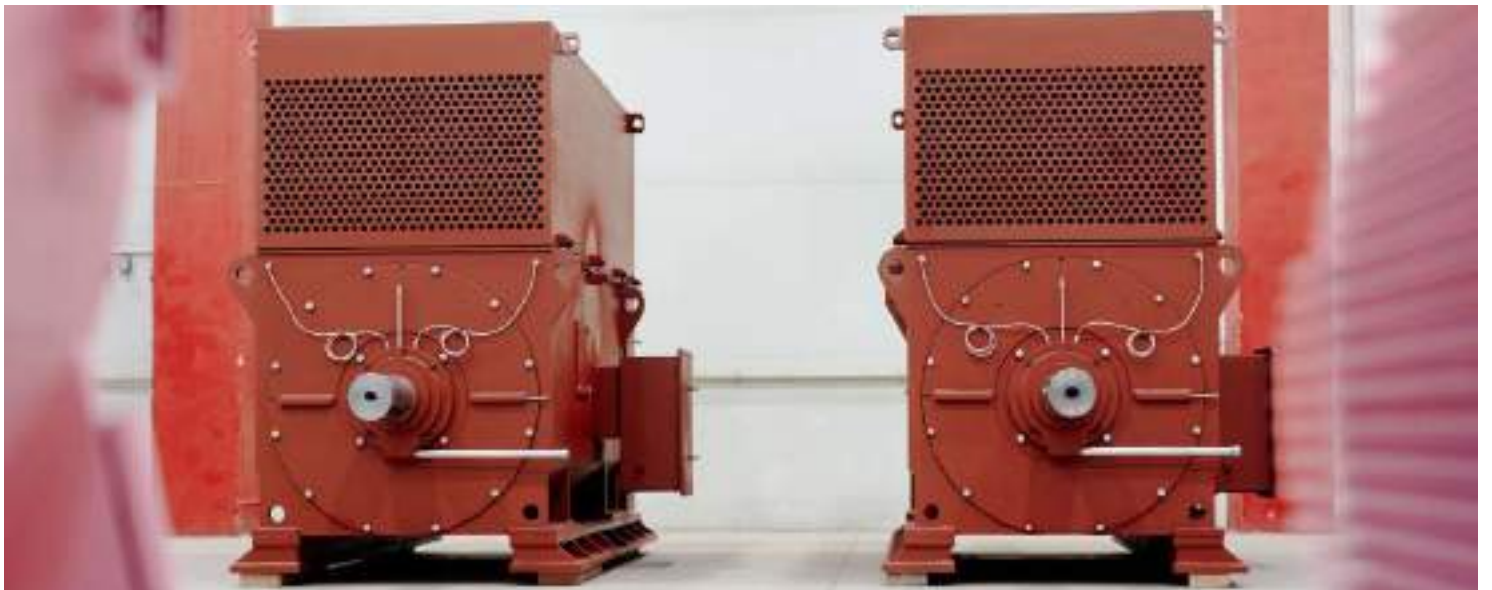




# Modular Asynchronous electric motor with copper bar rotor H27R-630-06-500

<b>VYBO Electric motor type</b>	Asynchronous electric motor H27R-630-06-500
<b>Country</b>	Spain
<b>Application</b>	fan
<b>Rated power</b>	1750 kW
<b>Rate voltage</b>	6000V
<b>Number of poles</b>	6 pole
<b>Rated speed</b>	990 rpm
<b>Rated frequency</b>	50Hz
<b>Type of construction</b>	IM B3
<b>Frame size / Shaft height</b>	500
<b>Protection class</b>	IP55
<b>Cooling type</b>	IC611
<b>Motor standard</b>	IEC / EN 60034-1
<b>Weight</b>	7800kg
<b>Insulation class</b>	F
<b>Special execution</b>	Insulation class H
<b>Quantity</b>	2





# Special higher power pressurised asynchronous electric motor H17RL-400-04

<b>VYBO Electric motor type</b>	Asynchronous electric motor H17RL-400-04
<b>Country</b>	Spain
<b>Application</b>	iron rolling mill
<b>Rated power</b>	800 kW S1/ 1500kW S6-15%
<b>Rate voltage</b>	400/690V
<b>Number of poles</b>	4 pole
<b>Rated speed</b>	1491 rpm
<b>Rated frequency</b>	50Hz
<b>Type of construction</b>	IM B3
<b>Frame size / Shaft height</b>	400mm
<b>Protection class</b>	IP55
<b>Cooling type</b>	IC411
<b>Motor standard</b>	IEC / EN 60034-1
<b>Weight</b>	4000kg
<b>Insulation class</b>	F
<b>Special execution</b>	VFD using,H class insulation,silencers,external cooling system IC416,air difusors
<b>Quantity</b>	4





# Special VFD motor with copper bar rotor H17RL-450-06

<b>VYBO Electric motor type</b>	Asynchronous electric motor H17RL-450-06
<b>Country</b>	Spain
<b>Application</b>	fan
<b>Rated power</b>	900 kW
<b>Rate voltage</b>	690V
<b>Number of poles</b>	6 pole
<b>Rated speed</b>	980 rpm
<b>Rated frequency</b>	50Hz
<b>Type of construction</b>	IM B3
<b>Frame size / Shaft height</b>	450mm/500mm
<b>Protection class</b>	IP55
<b>Cooling type</b>	IC416
<b>Motor standard</b>	IEC / EN 60034-1
<b>Weight</b>	5800kg
<b>Insulation class</b>	F
<b>Special execution</b>	Copper bar rotor,formed VFD winding,insulation bearings,insulations shield ,IC416,insulation class H



# Vertical ultra high efficiency asynchronous electric motor H17R-355-04-CR with double angular bearings

<b>VYBO Electric motor type</b>	Asynchronous electric motor H17R-355-04-CR
<b>Country</b>	Slovenia
<b>Application</b>	pumps
<b>Rated power</b>	500 kW
<b>Rate voltage</b>	6000V
<b>Number of poles</b>	4 pole
<b>Rated speed</b>	1487 rpm
<b>Rated frequency</b>	50Hz
<b>Type of construction</b>	IM V1+double angular bearings
<b>Frame size / Shaft height</b>	355mm
<b>Protection class</b>	IP55
<b>Cooling type</b>	IC411
<b>Motor standard</b>	IEC / EN 60034-1
<b>Weight</b>	3200kg
<b>Insulation class</b>	F
<b>Special execution</b>	Double angular bearings for very high axial pump pressures,copper bar rotors,very gigh efficiency
<b>Quantity</b>	12pcs







# Asynchronous electric motor

## H17R-315-04-10 pcs

<b>VYBO Electric motor type</b>	Asynchronous electric motor H17R-315-04
<b>Country</b>	Poland
<b>Application</b>	Fuel pumps
<b>Rated power</b>	200 kW
<b>Rate voltage</b>	6000V
<b>Number of poles</b>	4 pole
<b>Rated speed</b>	1490 rpm
<b>Rated frequency</b>	50Hz
<b>Type of construction</b>	IM B3
<b>Frame size / Shaft height</b>	315mm
<b>Protection class</b>	IP55
<b>Cooling type</b>	IC411
<b>Motor standard</b>	IEC / EN 60034-1
<b>Weight</b>	2200kg
<b>Insulation class</b>	F
<b>Special execution</b>	Copper bar rotor
<b>Quantity</b>	10pcs









# Asynchronous electric motor

## H17RL-450-06

<b>VYBO Electric motor type</b>	Asynchronous electric motor H17RL-450-06
<b>Country</b>	Chille
<b>Application</b>	Wood shreder
<b>Rated power</b>	900 kW
<b>Rate voltage</b>	400/690V
<b>Number of poles</b>	6 pole
<b>Rated speed</b>	980 rpm
<b>Rated frequency</b>	50Hz
<b>Type of construction</b>	IM B3
<b>Frame size / Shaft height</b>	450mm
<b>Protection class</b>	IP55
<b>Cooling type</b>	IC416
<b>Motor standard</b>	IEC / EN 60034-1
<b>Weight</b>	5900kg
<b>Insulation class</b>	F
<b>Special execution</b>	IC416,VFD winding,higher power pressurised motor
<b>Quantity</b>	2pcs











# Asynchronous electric motor H17R-315-500-CR-04- 9pcs

<b>VYBO Electric motor type</b>	Asynchronous electric motor H17R-315-500-CR-04
<b>Country</b>	Slovenia
<b>Application</b>	
<b>Rated power</b>	200 kW
<b>Rate voltage</b>	6000V
<b>Number of poles</b>	4 pole
<b>Rated speed</b>	1488 rpm
<b>Rated frequency</b>	50Hz
<b>Type of construction</b>	IM 1001
<b>Frame size / Shaft height</b>	
<b>Protection class</b>	IP54
<b>Cooling type</b>	IC411
<b>Motor standard</b>	IEC / EN 60034-1
<b>Weight</b>	
<b>Insulation class</b>	F
<b>Special execution</b>	CU rotor
<b>Quantity</b>	9pcs





# Asynchronous electric motor

## H27R-560-06 IP33

<b>VYBO Electric motor type</b>	Asynchronous electric motor H27R-560-06
<b>Country</b>	Czech republic
<b>Application</b>	boiler fan
<b>Rated power</b>	900 kW
<b>Rate voltage</b>	6000V
<b>Number of poles</b>	6 pole
<b>Rated speed</b>	991 rpm
<b>Rated frequency</b>	50Hz
<b>Type of construction</b>	IM B3
<b>Frame size / Shaft height</b>	560mm
<b>Protection class</b>	IP33
<b>Cooling type</b>	IC016
<b>Motor standard</b>	IEC / EN 60034-1
<b>Weight</b>	6300kg
<b>Insulation class</b>	F
<b>Special execution</b>	Special air cooling system



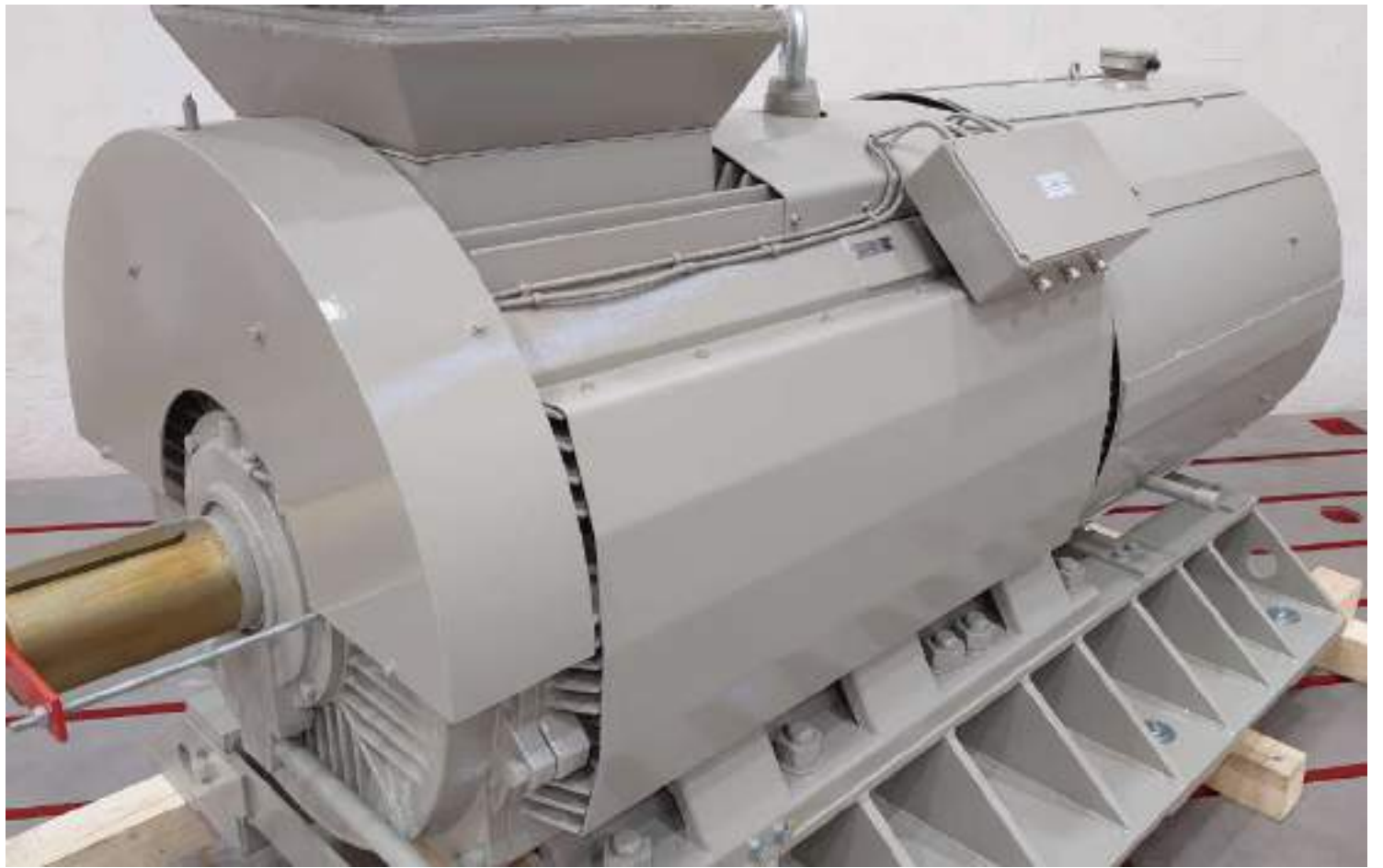




# Special asynchronous electric motor H17RL-400-04-630

<b>VYBO Electric motor type</b>	Asynchronous electric motor H17RL-400-04-630
<b>Country</b>	Sweden
<b>Application</b>	hydraulic press of high temperature forging
<b>Rated power</b>	700 kW
<b>Rate voltage</b>	500V
<b>Number of poles</b>	4 pole
<b>Rated speed</b>	1492 rpm
<b>Rated frequency</b>	50Hz
<b>Type of construction</b>	cast iron+welded steel combination
<b>Frame size / Shaft height</b>	400mm/630mm
<b>Protection class</b>	IP55
<b>Cooling type</b>	IC416
<b>Motor standard</b>	IEC / EN 60034-1
<b>Weight</b>	4300kg
<b>Insulation class</b>	H
<b>Special execution</b>	special protection of the cast iron structure against high ambient temperature (ambient temp more than 60 degrees)







# Special slip ring asynchronous electric motor H30R-SR-630-06-IC37

<b>VYBO Electric motor type</b>	Slip ring Asynchronous electric motor H30R -SR-630-06
<b>Country</b>	Croatia
<b>Application</b>	cement mill
<b>Rated power</b>	860 kW
<b>Rate voltage</b>	6000V
<b>Number of poles</b>	6 pole
<b>Rated speed</b>	987 rpm
<b>Rated frequency</b>	50Hz
<b>Type of construction</b>	welded steel
<b>Frame size / Shaft height</b>	630mm
<b>Protection class</b>	IP55
<b>Cooling type</b>	IC37
<b>Motor standard</b>	IEC / EN 60034-1
<b>Weight</b>	7800kg
<b>Insulation class</b>	F
<b>Special execution</b>	Special cooling IC37



# Special tube cooling asynchronous electric motor IC511 VYBO Electric H27R-RT-560-06

<b>VYBO Electric motor type</b>	Tube cooling IC 511 asynchronous electric motor VYBO Electric H27R-560-06
<b>Country</b>	Slovenia
<b>Application</b>	coal mill
<b>Rated power</b>	500 kW
<b>Rate voltage</b>	6000V
<b>Number of poles</b>	6 poles
<b>Rated speed</b>	990 rpm
<b>Rated frequency</b>	50Hz
<b>Type of construction</b>	welded steel with tube cooling
<b>Frame size / Shaft height</b>	560mm,600mm
<b>Protection class</b>	IP55
<b>Cooling type</b>	IC511
<b>Motor standard</b>	IEC / EN 60034-1
<b>Weight</b>	4300kg
<b>Insulation class</b>	F
<b>Special execution</b>	IC511 tube cooling
<b>Quantity</b>	4 pcs







# Special electric motor with copper bar double cage rotor H17RDCR-500-06

<b>VYBO Electric motor type</b>	Asynchronous electric motor H17RDCR-500-06
<b>Country</b>	Croatia
<b>Application</b>	
<b>Rated power</b>	630 kW
<b>Rate voltage</b>	6000V
<b>Number of poles</b>	6 pole
<b>Rated speed</b>	991 rpm
<b>Rated frequency</b>	50Hz
<b>Type of construction</b>	IM B3
<b>Frame size / Shaft height</b>	
<b>Protection class</b>	IP55
<b>Cooling type</b>	IC411
<b>Motor standard</b>	IEC / EN 60034-1
<b>Weight</b>	
<b>Insulation class</b>	F
<b>Special execution</b>	Special copper bar double cage rotor



# Asynchronous electric motor

## H17R-368-04

<b>VYBO Electric motor type</b>	Asynchronous electric motor 17R-368-04
<b>Country</b>	Venezuela
<b>Application</b>	compressor
<b>Rated power</b>	1000Hp
<b>Rate voltage</b>	4160V
<b>Number of poles</b>	4 pole
<b>Rated speed</b>	1780 rpm
<b>Rated frequency</b>	60Hz
<b>Type of construction</b>	IM B3
<b>Frame size / Shaft height</b>	368mm
<b>Protection class</b>	IP55
<b>Cooling type</b>	IC411
<b>Motor standard</b>	NEMA
<b>Weight</b>	4200kg
<b>Insulation class</b>	F
<b>Special execution</b>	NEMA dimensions











# Slip ring asynchronous electric motor H27R-TC-SR-630-06

<b>VYBO Electric motor type</b>	Slip ring asynchronous electric motor H27R-SR-630-06
<b>Country</b>	Germany
<b>Application</b>	mill
<b>Rated power</b>	950 kW
<b>Rate voltage</b>	6000V
<b>Number of poles</b>	6 pole
<b>Rated speed</b>	994 rpm
<b>Rated frequency</b>	50Hz
<b>Type of construction</b>	Welded steel with tube cooling
<b>Frame size / Shaft height</b>	630mm
<b>Protection class</b>	IP55
<b>Cooling type</b>	IC511
<b>Motor standard</b>	IEC / EN 60034-1
<b>Weight</b>	6300kg
<b>Insulation class</b>	F
<b>Special execution</b>	Special tube cooling frame







# Slip ring asynchronous tubec cooling electric motor with cooling IC516 VYBO type H27R-560-06

<b>VYBO Electric motor type</b>	Slip ring asynchronous electric motor VYBO type H27R-560-06
<b>Country</b>	Ukraine
<b>Application</b>	Hammer mill
<b>Rated power</b>	400 kW
<b>Rate voltage</b>	6000V
<b>Number of poles</b>	6 pole
<b>Rated speed</b>	986 rpm
<b>Rated frequency</b>	50Hz
<b>Type of construction</b>	welded steel with tube cooling
<b>Frame size / Shaft height</b>	560mm
<b>Protection class</b>	IP55
<b>Cooling type</b>	IC516
<b>Motor standard</b>	IEC / EN 60034-1
<b>Weight</b>	4000kg
<b>Insulation class</b>	F
<b>Special execution</b>	cooling IC516



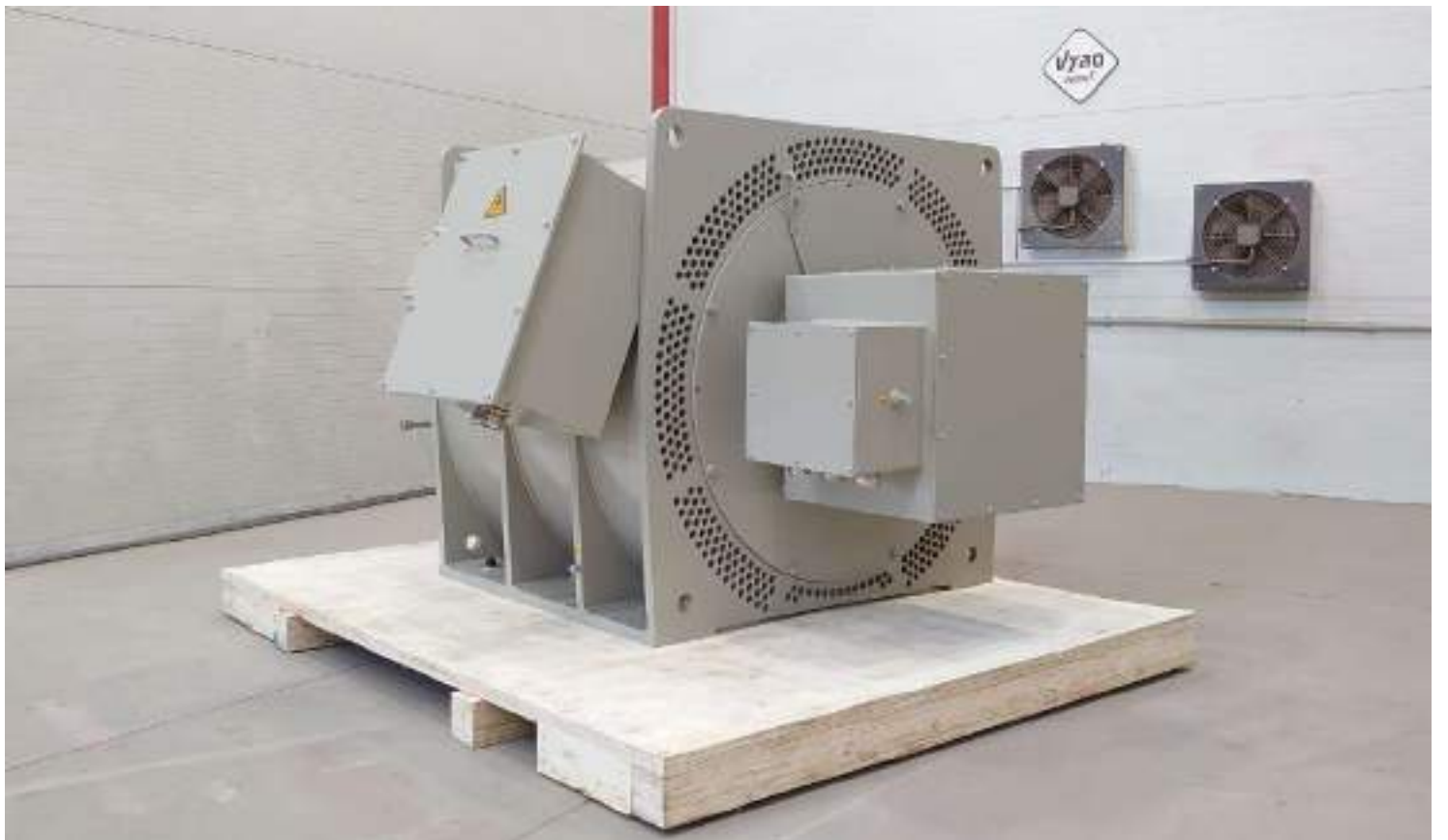


# Slip ring asynchronous tubec cooling electric motor with cooling IC511 VYBO type H27R-560-06

<b>VYBO Electric motor type</b>	Slip ring asynchronous electric motor VYBO type H27R-630-06
<b>Country</b>	Ukraine
<b>Application</b>	Hammer mill
<b>Rated power</b>	500 kW
<b>Rate voltage</b>	6000V
<b>Number of poles</b>	6 pole
<b>Rated speed</b>	986 rpm
<b>Rated frequency</b>	50Hz
<b>Type of construction</b>	welded steel with tube cooling
<b>Frame size / Shaft height</b>	630mm
<b>Protection class</b>	IP55
<b>Cooling type</b>	IC511
<b>Motor standard</b>	IEC / EN 60034-1
<b>Weight</b>	4300kg
<b>Insulation class</b>	F
<b>Special execution</b>	cooling IC511, super short version









# Tube/ribbed cooled slip ring asynchronous electric motor H17R-SR-355-06-400

<b>VYBO Electric motor type</b>	Slip ring Asynchronous electric motor H17R-SR-355-06-400
<b>Country</b>	Egypt
<b>Application</b>	Cement mill
<b>Rated power</b>	315 kW
<b>Rate voltage</b>	6300V
<b>Number of poles</b>	6 pole
<b>Rated speed</b>	985 rpm
<b>Rated frequency</b>	50Hz
<b>Type of construction</b>	IM B3
<b>Frame size / Shaft height</b>	355mm/400mm
<b>Protection class</b>	IP55
<b>Cooling type</b>	IC411/IC511
<b>Motor standard</b>	IEC / EN 60034-1
<b>Weight</b>	2500kg
<b>Insulation class</b>	F
<b>Special execution</b>	Special tube frame with ribbed combination







# Modular Asynchronous electric motor H27R-500-06

<b>VYBO Electric motor type</b>	Asynchronous electric motor H27R-500-06
<b>Country</b>	Poland
<b>Application</b>	fan
<b>Rated power</b>	1900 kW
<b>Rate voltage</b>	6000V
<b>Number of poles</b>	6 pole
<b>Rated speed</b>	980 rpm
<b>Rated frequency</b>	50Hz
<b>Type of construction</b>	Modular welded steel
<b>Frame size / Shaft height</b>	500mm
<b>Protection class</b>	IP55
<b>Cooling type</b>	IC611
<b>Motor standard</b>	IEC / EN 60034-1
<b>Weight</b>	8900kg
<b>Insulation class</b>	H
<b>Special execution</b>	Copper bar rotor,H class insulation









# Slip ring asynchronous electric motor with cooling IC511 VYBO type H27R-TC--SR-600-04

<b>VYBO Electric motor type</b>	Slip ring asynchronous electric motor VYBO type H27R-TC-SR-600-04
<b>Country</b>	Slovenia
<b>Application</b>	mine hoist
<b>Rated power</b>	500 kW
<b>Rate voltage</b>	6000V
<b>Number of poles</b>	4 pole
<b>Rated speed</b>	1470 rpm
<b>Rated frequency</b>	50Hz
<b>Type of construction</b>	welded steel with tube cooling IC511
<b>Frame size / Shaft height</b>	600mm
<b>Protection class</b>	IP55
<b>Cooling type</b>	IC511
<b>Motor standard</b>	IEC / EN 60034-1
<b>Weight</b>	4400kg
<b>Insulation class</b>	F
<b>Special execution</b>	Special tube cooling IC511









# Slip ring high voltage asynchronous electric motor H27R-SR-560-06

<b>VYBO Electric motor type</b>	Slip ring asynchronous electric motor H27R-SR-560-06
<b>Country</b>	Czech republic
<b>Application</b>	Vertical mill
<b>Rated power</b>	800 kW
<b>Rate voltage</b>	6000V
<b>Number of poles</b>	6 pole
<b>Rated speed</b>	989 rpm
<b>Rated frequency</b>	50Hz
<b>Type of construction</b>	Modular welded steel
<b>Frame size / Shaft height</b>	560mm
<b>Protection class</b>	IP55
<b>Cooling type</b>	IC611
<b>Motor standard</b>	IEC / EN 60034-1
<b>Weight</b>	8700kg
<b>Insulation class</b>	F
<b>Special execution</b>	-







# Special vertical Slip ring Asynchronous electric motor H27R-800-10

<b>VYBO Electric motor type</b>	Slip ring Asynchronous electric motor
<b>Country</b>	Spain
<b>Application</b>	Cement mill
<b>Rated power</b>	407 kW
<b>Rate voltage</b>	6300V
<b>Number of poles</b>	10 pole
<b>Rated speed</b>	590 rpm
<b>Rated frequency</b>	50Hz
<b>Type of construction</b>	IM V1
<b>Frame size / Shaft height</b>	800mm
<b>Protection class</b>	IP55
<b>Cooling type</b>	IC511
<b>Motor standard</b>	IEC / EN 60034-1
<b>Weight</b>	10 500 kg
<b>Insulation class</b>	F
<b>Special execution</b>	Service factor 2.3,shaft 420mmx 220mm



# Asynchronous electric motor

## H27R500-06 3pcs

<b>VYBO Electric motor type</b>	Asynchronous electric motor H27R500-06
<b>Country</b>	Slovenia
<b>Application</b>	fan
<b>Rated power</b>	800 kW
<b>Rate voltage</b>	6000V
<b>Number of poles</b>	6 pole
<b>Rated speed</b>	990 rpm
<b>Rated frequency</b>	50Hz
<b>Type of construction</b>	Modular welded steel
<b>Frame size / Shaft height</b>	500mm
<b>Protection class</b>	IP55
<b>Cooling type</b>	IC611
<b>Motor standard</b>	IEC / EN 60034-1
<b>Weight</b>	6500kg
<b>Insulation class</b>	F
<b>Special execution</b>	-
<b>Quantity</b>	3pcs



# Asynchronous electric motor

## H27R-500-10

<b>VYBO Electric motor type</b>	Asynchronous electric motor H27R-500-10
<b>Country</b>	Ukraine
<b>Application</b>	Hammer mill
<b>Rated power</b>	800 kW
<b>Rate voltage</b>	6000V
<b>Number of poles</b>	10 pole
<b>Rated speed</b>	593 rpm
<b>Rated frequency</b>	50Hz
<b>Type of construction</b>	Modular welded steel
<b>Frame size / Shaft height</b>	500mm
<b>Protection class</b>	IP55
<b>Cooling type</b>	IC666
<b>Motor standard</b>	IEC / EN 60034-1
<b>Weight</b>	8900kg
<b>Insulation class</b>	F
<b>Special execution</b>	IC666 from side







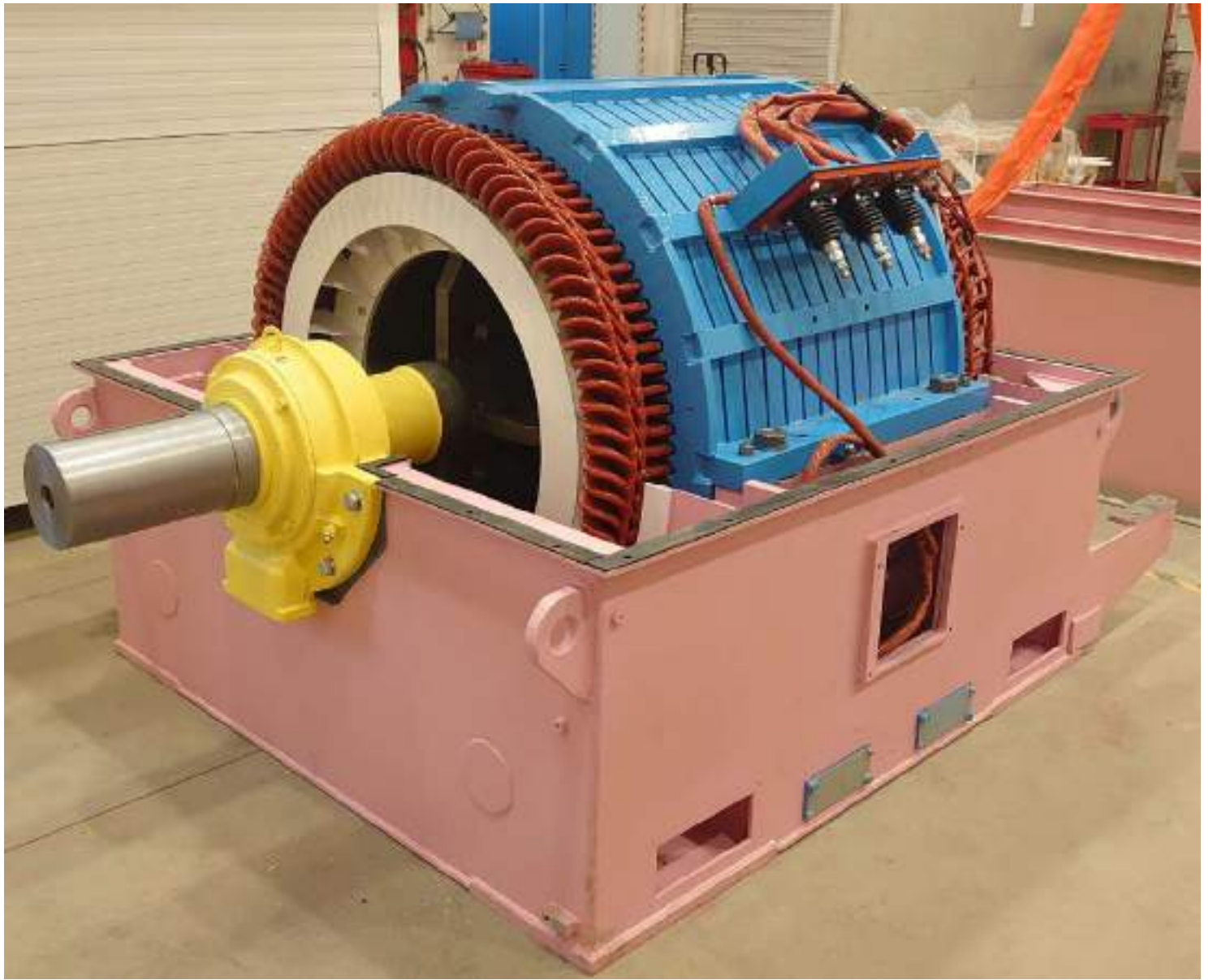
# Asynchronous electric motor

## H27R-740-12

<b>VYBO Electric motor type</b>	Asynchronous electric motor H27R-740-12
<b>Country</b>	North Macedonia
<b>Application</b>	Coal mill
<b>Rated power</b>	800 kW
<b>Rate voltage</b>	6000V
<b>Number of poles</b>	12 pole
<b>Rated speed</b>	493 rpm
<b>Rated frequency</b>	50Hz
<b>Type of construction</b>	Modular welded steel
<b>Frame size / Shaft height</b>	710mm/740mm
<b>Protection class</b>	IP55
<b>Cooling type</b>	IC611
<b>Motor standard</b>	IEC / EN 60034-1
<b>Weight</b>	10000 kg
<b>Insulation class</b>	F
<b>Special execution</b>	Copper bar rotor









# Asynchronous electric motor

## H27R-630-12

<b>VYBO Electric motor type</b>	Asynchronous electric motor H27R-630-10
<b>Country</b>	Singapore
<b>Application</b>	Pump
<b>Rated power</b>	800 kW
<b>Rate voltage</b>	6000V
<b>Number of poles</b>	10 pole
<b>Rated speed</b>	590 rpm
<b>Rated frequency</b>	50Hz
<b>Type of construction</b>	IM B3
<b>Frame size / Shaft height</b>	630mm
<b>Protection class</b>	IP55
<b>Cooling type</b>	IC611
<b>Motor standard</b>	IEC / EN 60034-1
<b>Weight</b>	9500kg
<b>Insulation class</b>	F
<b>Special execution</b>	Special frame













# Welded steel ribbed cooled asynchronous electric motor H17R-500-04

<b>VYBO Electric motor type</b>	Asynchronous electric motor H17R-500-04
<b>Country</b>	Mali
<b>Application</b>	Pump
<b>Rated power</b>	800 kW
<b>Rate voltage</b>	3300V
<b>Number of poles</b>	4 pole
<b>Rated speed</b>	1480 rpm
<b>Rated frequency</b>	50Hz
<b>Type of construction</b>	Welded steel ribbed frame
<b>Frame size / Shaft height</b>	500mm
<b>Protection class</b>	IP55
<b>Cooling type</b>	IC511
<b>Motor standard</b>	IEC / EN 60034-1
<b>Weight</b>	6200kg
<b>Insulation class</b>	F
<b>Special execution</b>	Welded steel frame,copper bar rotor
<b>Quantity</b>	2









## Address

VYBO ELECTRIC a. s. | tel: +421 944 105 361  
Radlinského 18 | e-mail: mv@vyboelectric.eu  
052 01 Spišská Nová Ves  
Slovenská republika

[www.vyboelectric.com](http://www.vyboelectric.com)



SOLUTIONS FOR INDUSTRY